



Radio Frequency Do's & Don'ts

Please read before installing !

Almost all of us have used a cordless phone, cellular phone, or FRS radios by now. They all work with the same principles as our wireless products only they have the advantage of us listening to hear when we are in a bad location by hearing static or noise and knowing we have to move closer or move to a hill (higher) to acquire better signal reception. Radio frequency (wireless) in simple terms consists of a transmitter and a receiver. Our transmitters send data via radio frequency (wireless) to the receiver (inside) triggering a tone or alert inside your home. Line of sight with no obstructions between outside device and inside receiver are always favorable for the best results. 98% of our tech support phone calls are asking why my sensor isn't working or is intermittent in sensing. And 98% of the time it is poor communications between outside sensor and inside receiver. A good example is using your cordless phone or cell phone and stepping one direction or the other to sound clear or full of static and noise. The difference is you are able to hear the noise and adjust your location. Because our devices send data, the only way to determine "noise" or "static" is by your system not "beeping" or intermittent and/or erratic operation.

Learn how your sensing device works by trying it first in your house before mounting it at the location that you want to install it. All variables are less of a factor the closer the receiver and sensor are to each other. In other words it is more critical at 700 foot distance than at 100 foot distance from transmitter to receiver.

Do's

- Mount the receiver as high as possible in your home.
- Make transmitter to receiver as clear of obstructions as possible.
- Try your sensor and receiver inside before mounting to understand how unit operates.
- Set the receiver at a window on the same side of the house as the sensor.

Don'ts

- Do not set the receiver on the floor inside your home.
- Do not place the receiver in a basement.
- Do not set your receiver next to cordless phones, computers, or any other electronic devices.
- Do not set the receiver next to metal devices.
- Do not mount the outside sensor on metal.
- Do not set your outdoor sensor on the ground to test.

Other Wireless Facts:

- Steel or aluminum siding can greatly reduce range of transmitter to receiver range.
- Metalized Celotex under siding or brick can have a huge effect on reduction of range.
- Brick and masonry will have a substantial range reduction.
- Height is a huge factor in performance of transmission distance.
- Glass windows provide the least resistance to radio frequency.
- Always try to place your receiver at a window on the same side of your home as the sensor outside.
- The closer the sensor is to the receiver, the less that the above play into as factors.
- Mounting an outdoor sensor over a hill has the most reducing effect of radio frequency distance.
- Usually small receiver relocations are all that is needed.
- 2nd story placement of the receiver can result in a huge distance increase if applicable.
- Maximum height and minimum obstructions are the largest benefit in range.
- Our units distance are rated line of sight average. You can experience more or less range than rated.
- Weather conditions can also change performance of distance.
- Over a period of time range can slightly degrade as product ages, frequencies of product slightly shift, foliage growth, or local RF interference changes. You may need to relocate the sensor closer to the receiver.



Locate the probe as close to the edge of driveway as possible. Maximum distance to detect a vehicle is approx. 14' away from the probe. Before burying probe, try for a week or two to ensure proper communication between control box and receiver are verified.

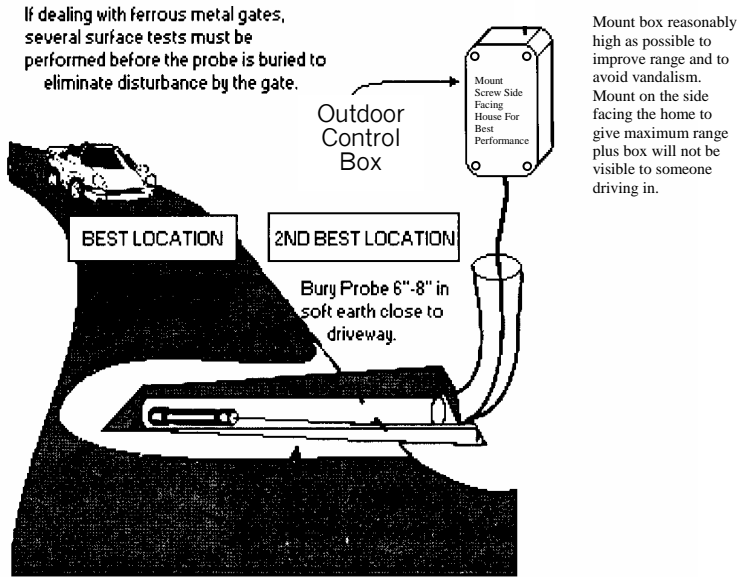


Mount the control box as high as possible for best communication to the receiver.

Mounting on the back side of the pole toward receiver will give you a stealth appearance as no one will see the box driving in plus the wireless communication will improve by not transmitting through the density of the mounting object.

Try unit in house or close proximity before mounting probe and outdoor housing.
Learn how your unit operates before taking it a long distance away.

Installation Suggestions



Possible Ways to Bury Probe

- 1) Center of Driveway - 1st Choice
 - a) Sensitivity can be lowered for greater stability
 - b) Range can be extended for a wide driveway
 - c) Bury probe under driveway by encasing probe in 2" or 3" PVC pipe that has been sealed at one end.
 - i) Pipe should be pitched for drainage.
 - ii) Allows retrieval of probe at later date.
- 2) Alongside Driveway - 2nd Choice
 - a) Bury probe 6"-8" in soft earth close to driveway.
 - b) Place probe parallel to traffic motion.

Try unit in desired area several weeks before burying probe!

Range & Sensitivity Do's & Don'ts

- The range of the probe will cover a 14 ft. driveway.
- Lay probe as close to driveway as possible.
- Do not cut probe cable. It is better to coil up any extra.
- Do not bury probe within 5 ft. of power cables or transformers.
- Do not bury probe within 20 ft. of high powered radio transmitter towers.
- Do not bury probe within 25 ft. of residential traffic.
- Do not bury probe within 40 ft. of highway traffic.
- Do not bury probe within 100 ft. of moving trains.
- Do not set the receiver on the floor in your house.
- The higher the receiver and box outdoors, the more range you will get.
- Mount transmitter box at least 10 ft. from probe.
- Probe slid in PVC pipe, capped on one end and pitched for drainage, will give the longest life to probe and is recommended but not required.
- Install probe parallel with driveway.
- Mount transmitter box as high on tree, pole, building, etc. as you can.
- The higher the transmitter box, the greater range to receiver in house.
- Initial stabilization when installing battery may take several minutes.
- When batteries are low, system may oscillate or not work at all.
- 9 volt lithium batteries will last longest.
- Over tightening screws can warp box allowing moisture to enter box.
- Probe sensitivity adjustment inside of housing. (Small white dial)
- Always keep sensitivity as minimal as possible to avoid any false signals.

Receiver

- Set receiver in window that it can "see" transmitter to get maximum range.
- Don't set the receiver on the floor or put in basement.
- You can set receiver in other locations if less range is needed.
- Height and least obstructions give you maximum range.
- 1500 and 5000 receivers hanging up by constantly beeping indicates a communication problem between outdoor and indoor units. Not applicable to 500 ft range model 500P.

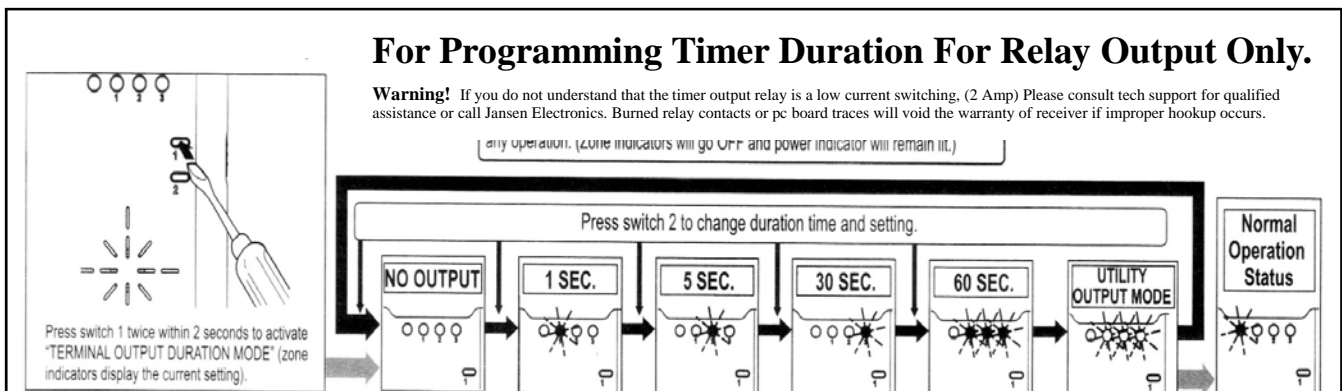
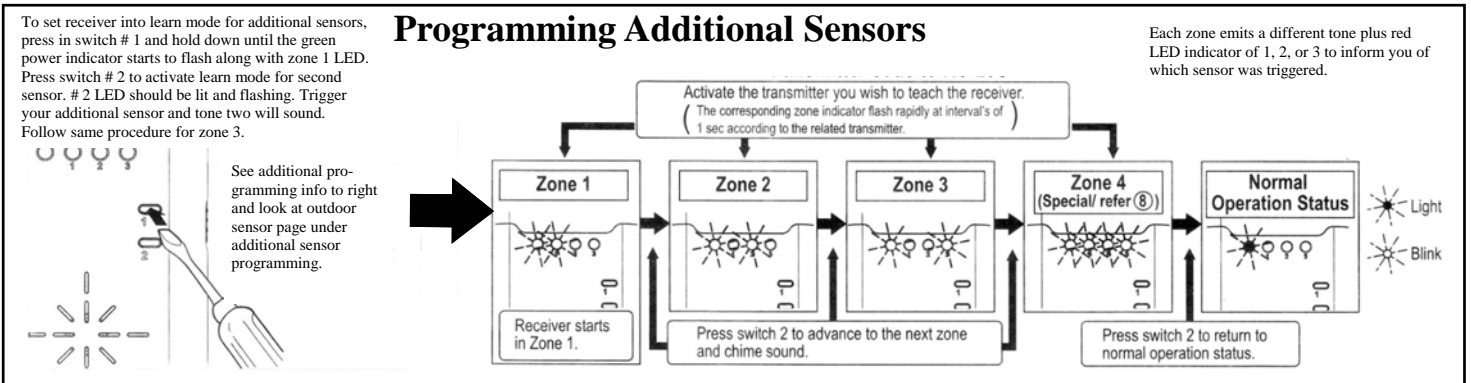
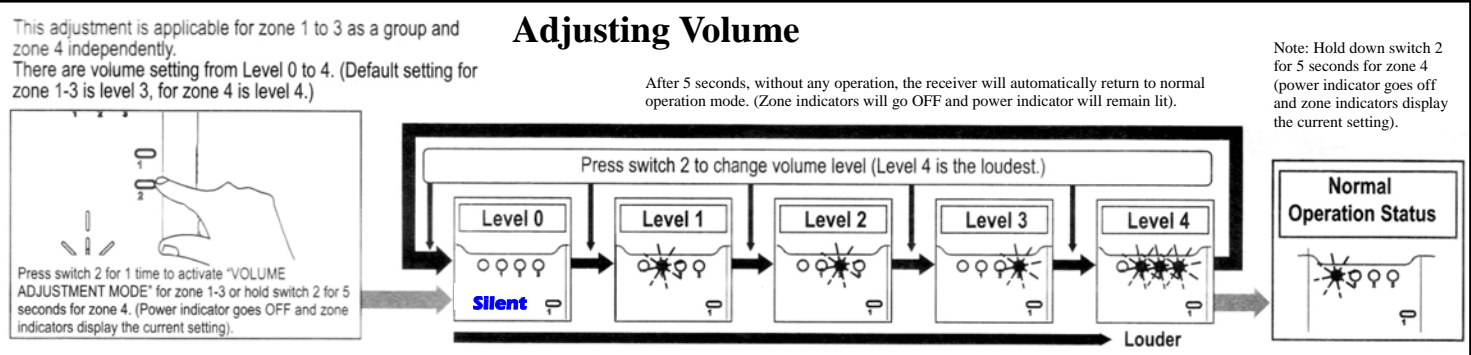
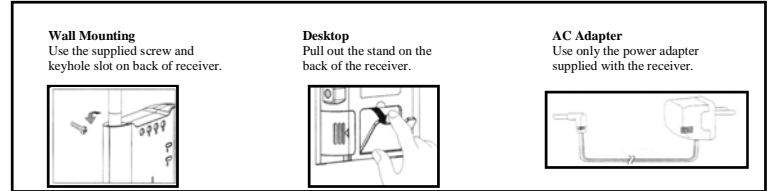
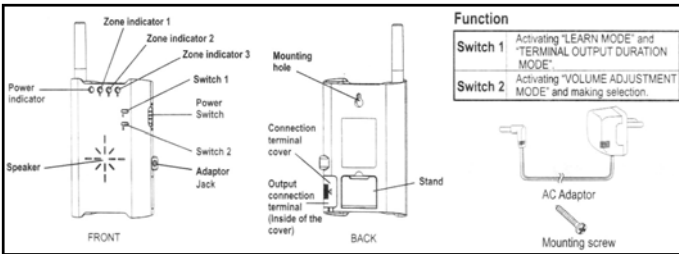
JANSEN
ELECTRONICS

2885 S. Rock City Rd.
Ridott, IL. 61067
815-232-3093

You must install the batteries !! **Shipped not installed !!**
Unit will transmit and oscillate for several minutes until stabilizes.

Probe Overview

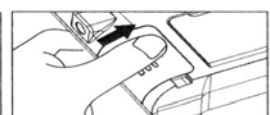
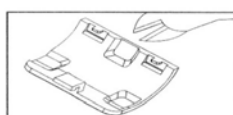
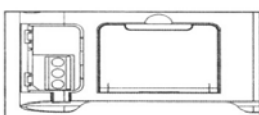




How To Install A Device To The Relay Output: Line Driver, Pager, Timer, Phone Dialer, Lights, Etc.

Terminal connection
Any device with a zero voltage input terminal can be connected to this terminal. This may include electronic locks, emergency sounding devices, and automatic reporting equipment.

2 Amp Max.





2285 S Rock City Rd
Ridott, IL 61067
Phone: 815-232-3093
Fax: 815-232-3693
E Mail: info@jansenelectronics.com
www.jansenelectronics.com

LIMITED WARRANTY

Jansen Electronics, a division of RFR Inc. and its subsidiaries and affiliates ("Seller") warrants its products to be free from defects in materials and workmanship under normal use for 12 or 24 months (product dependant) from the date of sale. Because Seller does not install or connect the product and because the product may be used in conjunction with products not manufactured by Seller, Seller can not guarantee the performance of the security system which uses the product. Seller's obligation and liability under this warranty is expressly limited to repairing or replacing, at Sellers option, within a reasonable time after the date of delivery, any product not meeting the specifications.

SELLER MAKES NO OTHER WARRANTY, EXPRESSED OR IMPLIED, AND MAKES NO WARRANTY OF MERCHANTABILITY OR OF FITNESS FOR ANY PARTICULAR PURPOSE. IN NO CASE SHALL SELLER BE LIABLE FOR ANY CONSEQUENTIAL OR INCIDENTAL DAMAGES FOR BREACH OF THIS OR ANY OTHER WARRANTY, EXPRESSED OR IMPLIED, OR UPON ANY OTHER BASIS OF LIABILITY WHATSOEVER.

Seller's obligation under this warranty shall not include any transportation charges or costs of installation or any liability for direct, indirect or consequential damages or delay. Seller does not represent that its products may not be compromised or circumvented by burglary, robbery, fire or otherwise; or that the product will in all cases provide adequate warning or protection. Buyer understands that a properly installed and maintained alarm may only reduce the risk of burglary, robbery, or fire without warning, but it is not insurance or a guarantee that such will not occur or that there will be no personal injury or property loss as a result.

CONSEQUENTLY, SELLER SHALL HAVE NO LIABILITY FOR ANY PERSONAL INJURY, PROPERTY DAMAGE OR OTHER LOSS BASED ON A CLAIM THAT THE PRODUCT FAILS TO GIVE WARNING. HOWEVER, IF SELLER IS HELD LIABLE WHETHER DIRECTLY OR INDIRECTLY, FOR ANY LOSS OR DAMAGE ARISING UNDER THIS LIMITED WARRANTY OR OTHERWISE, REGARDLESS OF CAUSE OF ORIGIN, SELLER'S MAXIMUM LIABILITY SHALL NOT IN ANY CASE EXCEED THE PURCHASE PRICE OF THE PRODUCT, WHICH SHALL BE THE COMPLETE AND EXCLUSIVE REMEDY AGAINST SELLER.

No employee or representative of Seller is authorized to change this warranty in any way or grant any other warranty.

WARNING: This product should be tested at least once a day.

Any returns or refunds from Jansen Electronics require a return authorization number for any reason. Call 815-232-3093 to obtain an RA#. Packages will be refused and returned to sender if no RA # is on written outside of package. No Refunds On Shipping Charges!

Proof of purchase from an authorized dealer of Jansen Electronics must be provided for all warranty claims. Once item is received and inspected, Jansen Electronics will have the option to repair or replace the defective product. Any alteration of the units serial # or units purchased from unauthorized dealers will void any warranty. Any misuse, physical or liquid damage, modifications, or alterations to product will void warranty.

Jansen Electronics is not responsible for any refunds for products purchased from authorized dealers. Consumer must contact dealer directly for their return procedures.

Return procedures for 30 day money back guarantee policy for products purchased directly from Jansen Electronics:

1. Call for a Return Authorization number (RA#) before sending the unit back 815-232-3093.
2. Product must be shipped back to Jansen Electronics within 30 days from receipt of product(s)
3. Original receipt must accompany the product for refunds and warranty issues.
4. Customer is responsible for proper shipping, packaging, and insurance to Jansen Electronics.
5. Any misuse, physical damage, liquid damage, or product alteration will void refund policy and warranty.
6. Dealers will use their own standard return/restock policies.
7. Minimum 20% restock fee will apply to merchandise returned in used condition.
8. Items returned for full credit/refund must be in like new saleable condition with all manuals, accessories, original packaging with no cosmetic scratches, dents, or cracks, modifications, physical or electrical damage, misuse of product, etc.